

Siemers



Genetics for Cow People

Holsteins

“Genetics for Cow People”

“If you put your mind to doing whatever it is you want to do, good things can happen.”

- MICHAEL JORDAN

LOCATION

Eastern WI

8 Miles West of Lake Michigan

Half way between Green Bay and
Milwaukee



Scope



Siemers Holsteins

6800 Milking & Dry Cows

3200 Hectare

RHA 17050kg 4.3% 3.1 %

+300 Embryo Implants Weekly

History

Currently 5th & 6th generation

Early 2000s we experimented with cross breeding heavily in the commercial dairy.

2009 transitioned back to Holsteins and built deep bedded sand freestalls.



Learning Through the Early 2010s

PETY 7HO12139
HO840003010660326

SIEMERS MOGUL PETY TR TC TY TV TL TD HH1T HH2T HH3T HH4T HH5T HH6T
MOGUL X EXPLODE X MAC

Last Update: 4/24/2023

Born On September 8, 2012

Beta-casein: A1A2 Kappa-casein: AE EFI: 10.3% aAa: 354126

Sire: MOUNTFIELD SSI DCY MOGUL-ET

Dam: RANSOM-RAIL EXPLODE PETY-ET EX-90

3-10 3X 365D 23,705 kgM 3.8% 897 kgF 3.3% 773 kgP

MGS: WABASH-WAY EXPLODE-ET



CHERRY CREST MANOMAN ROZ



- Purchased in the 2010 World Classic
- Super Balanced Line – The Golden Standard at Siemers Holsteins
- Roz was our foray into the business and was ignited the passion
- Pedigree x Performance x Genomics
 - Roz EX-91 x EX-91 Elegant x EX-95 Outside Roz
- Same Family as WWS Rozline 250H15087

Breeding Lesson #1 – Families Matter



➤ GEN-I-BEQ SHOTTLE BOMBI-ET EX-94 94-MS



➤ MAPEL WOOD MAN O MAN BROOKE VG-88

2014 – The Next Chapter

WDE 2014





Cookiecutter MOG Hanker-ET

Sells as Lot 9

9

Cookiecutter MOG Hanker-ET

Born 6/10/2012 Reg. 840 3010693854 100%RHA
 50K GTPI +2476 / GLPI +3215 / DGV +3298
 PTA +1477M +83F +63P 75%R 8/2014
 PTA +763NM +11%F +07%P +4.2PL 2.78SCS +SDPR 6.4%DCE
 PTA +3.55T +3.42UDC +2.65FLC 73%R 8/2014
 CAN GPA +1168M +75F +63P +15C +15MS

• Will Sell Fresh, Due in Sept. and looks extremely promising!

• Her daughter by Tango sold for \$200,000 in the 2014 International Intrigue Sale

• Min. Starting Bid \$75,000

MOUNTFIELD SSI DCY MOGUL-ET
 840 3006972816 TR TV TL TY TD
 GTPI +2467

PTA +1643M +90F +57P 84%R 8/2014
 PTA +853NM +12%F +03%P 100%US
 PTA +5.0PL 2.70SCS +SDPR 5.6%DCE
 PTA +2.95T +3.06UDC +2.91FLC 78%R 8/2014

COOKIECUTTER MOM HALO-ET
 840 3007069733

VG-88 VV+VE DOM 2-09 50K GTPI +2301
 PTA +1101M +80F +53P 82%R 8/2014
 PTA +648NM +15%F +07%P
 PTA +2.8PL 2.79SCS -2DPR 4.8%DCE
 PTA +3.33T +3.29UDC +1.34FLC 83%R 8/2014
 2-00 3 365 35410 5.2 1832 3.5 1241

• Halo is the Dam of Cookiecutter Petrone Halogen, +2487 GTPI & +882NM & Cookiecutter Montre 12047-ET, +2479 GTPI, +829NM

COYNE-FARMS DORCY-ET 139005002
 BY TV TL

VG-87 VVV+ 4-09 GTPI +2352
MOUNTFIELD MARSH MAXINE-ET
 62784081

VG-88 VV+VE DOM 2-07
 2-03 2 159 14320 4.3 611 3.4 481 (Inc)

LONG-LANGS OMAN OMAN-ET
 135746776 TV TL TY TD

VG-85 VVV+ 4-11 GM GTPI +2120
 PTA +1.87T +1.59UDC +1.25FLC 99%R 8/2014
COOKIECUTTER GLD HOLLER-ET
 62914715

VG-88 VVV+E DOM 2-11 GTPI +1912
 PTA +3.34T +3.01UDC +1.84FLC 89%R 8/2014
 2-03 3 365 40730 3.5 1410 3.1 1249

• Her Bowser drs sold for \$28,000 in the '10 Nat'l Sale

John & Karen Weller
 6249 W Grant Rd
 Middleton, MI 48856
 989/236-5431

Terms: Cash unless prior arrangements are made specifically with seller and sale management is advised of these special terms in advance of the sale

3rd Dam: MS Kings-Rnsm Champ Haley-ET
 (EX-90 EX-MS GMD DOM)
 3-11 3 365 43690 3.7 1625 3.1 1357

4th Dam: Regancrest-JDV Hanna-ET
 (EX-90 EEVVE)
 4-07 3 365 45110 4.3 1922 3.2 1449

5th Dam: Long-Haven Rudolph Dee-ET
 (2E-90 EVVEE GMD DOM)
 2-11 2 365 32720 4.8 1565 3.8 1252

LIFE 2306 166900 4.3 7099 3.5 5884

6th Dam: Regancrest Elton Disrael-ET
 (VG-88 EX-MS DOM)
 2.04 2 365 33617 4.5 1499 3.5 1169

Full Brother to Disrael:
 Regancrest Elton Durham-ET (EX-90 GM)

7th Dam: Snow-N Denises Della
 (2E-95 EX-MS GMD DOM 2*)
 7-06 2 365 35610 4.0 1431 2.9 1035

LIFE 2558 180240 3.9 7108 3.2 5723

32 EX & 49 VG offspring

8th Dam: Snow-N Dorys Denise
 (2E-90 EX-MS GMD DOM)
 5-09 2 365 33350 3.8 1256 3.1 1038

n't



Ransom-Rail Facebk Paris-ET

Sells as Lot 48 & Dam of Lot 49

49

Quality Tango Paris

Born 4/12/2014 Reg. 11842717C 100%RHA

GTPI +2475 / GLPI +3195 / DGV +3295
 PTA +2069M +92F +74P 73%R 8/2014
 PTA +736NM +06%F +04%P
 PTA +2.0PL 2.89SCS +9DPR 4.8%DCE
 PTA +3.51T +2.82UDC +2.38FLC 72%R 8/2014
 CAN GPA +1943M +93F +80P +15C +13MS +10FL

Terms: Cash unless prior arrangements are made specifically with seller and sale management is advised of these special terms in advance of the sale

MR WELCOME HILL TANGO-ET
 70750485 TV TL TY TD

GTPI +2401
 PTA +2178M +70F +58P 78%R 8/2014
 PTA +747NM -.03%F -.03%P 100%US
 PTA +4.2PL 2.73SCS +1.0DPR 5.4%DCE
 PTA +2.98T +3.01UDC +2.26FLC 77%R 8/2014

RANSOM-RAIL FACEBK PARIS-ET
 70350746 TY

VG-86-2Y CAN
 GTPI +2408 / GLPI +3364 / DGV +3469
 PTA +1412M +87F +65P 78%R 8/2014
 PTA +720NM +13%F +08%P
 PTA +2.7PL 2.85SCS +1.4DPR 5.2%DCE
 PTA +3.04T +2.34UDC +2.85FLC 76%R 8/2014
 CAN GPA +1730M +102F +83P +12C +9MS +15FL
 2-03 2 130 11975 4.3 487 3.3 364 (Inc)
 • The #1 GLPI Facebook in Canada & the #3 GLPI cow in Canada!

• Sells as Lot 48

LOTTA-HILL SHOTTLE 41-ET 62942427
 TR TV TL TY TD

GM GTPI +2224
MS WELCOME COLBY TAYA-ET
 840 3002918882 TY
 VG-88 EEEV DOM 5-01
 1-10 3 365 41240 3.3 1357 3.2 1333

MARBRI FACEBOOK-ET 10847042C TV
 TL TY TD

VG-86-2Y CAN GTPI +2356
WELCOME MAC PEYLAN-ET 65785439
 VG-87 VVVVV 3-01 50K GTPI +2161
 PTA +409M +59F +46P 86%R 8/2014
 PTA +578NM +17%F +13%P
 PTA +1.9PL 2.84SCS +1.8DPR 5.3%DCE
 PTA +2.17T +2.05UDC +2.36FLC 82%R 8/2014
 4-08 3 322 339270 5.4 2107 4.0 1567
 2-04 3 365 31650 4.7 1479 3.8 1204
 • First choices to sell out of Peytan have sold for \$27,000, \$15,000 & \$15,200
 • Maternal Sister by Bowser sold for \$64,000 in the 2010 World Classic Sale

Quality Holsteins, Marc Wolf
 & Ernest Kueffner
 8400 Huntington Rd Rr 1
 Vaughan, ON, L4L1A5
 905/851-3892

3rd Dam: Welcome Goldwyn Peyna
 (VG-89 VVVEE GMD DOM 2Y)
 2-00 3 365 34780 3.5 1203 3.3 1159
 • Embryos Exported Worldwide!
4th Dam: Welcome Ozzie Peya-ET
 (EX-90 EX-MS DOM)
 1-11 3 365 31310 4.0 1260 3.4 1054
5th Dam: Welcome Aaron Penel
 (VG-87 VVVVV DOM)
 4-08 3 365 35210 4.2 1480 3.5 1240
6th Dam: Welcome Merrill Perky-ET
 (VG-85 VG-MS)
 4-03 3 365 34690 3.6 1235 3.3 1139
 LIFE 1589 136330 3.5 4785 3.3 4453
7th Dam: Welcome Oscar Proxy
 (G-78 DOM 2Y)
 4-08 3 365 35990 4.1 1487 3.3 1288
 LIFE 1370 113180 4.1 4621 3.6 4123
8th Dam: Willow-Marsh-Drw Prozac
 (VG-85 VG-MS)
 4-00 3 365 30470 4.2 1279 3.3 1012
 LIFE 1353 103540 4.6 4434 3.4 3562
9th Dam: Dusty-Creek Rotate Ping-TW
 (VG-86 VG-MS)
 3-06 2 365 33100 3.6 1192 3.3 1086
10th Dam: VG-87



HANKER

Global Cow of the Year - 2020



Breeding Lesson #2 – Use the **BEST** Bulls

- 1) Have a GOAL
- 2) Use the BEST Bulls that fit that GOAL

NAME	RC	PC	DAM	FS	SIRE	MGS	GMGS	GTPi	HHP\$	MILK	FAT	PRO	CFP	PTAT	UDC	FLC	zMAS	zLAM
SIEMERS PFCT HARDY 35126-ET			SIEMERS ALVZ HANAN 31406-ET	90	PARFECT	ALVAREZ	DOC	2923	788	895	74	48	122	3.27	3.07	2.13	100	98
SIEMERS HANAN HANX-P -ET		PC	SIEMERS LSTR HANAN 33317-ET	89	HANANS	LUSTER-P	DOC	2903	768	850	69	44	113	3.45	2.84	1.60	106	99
SIEMERS WOLF HULU 37006-ET	Y		SIEMERS LSTR HANAN 33317-ET	89	WOLFGANG P	LUSTER-P	DOC	2911	728	983	58	48	106	3.91	3.27	1.62	104	98
SIEMERS EXC HANANS 31753-ET			SIEMERS DOC HANAN 28286-ET	92	EXCALIBUR	DOC	MONTEREY	2801	705	308	75	38	113	3.62	2.86	2.38	105	97
SIEMERS HOM HANSKE-P -ET		PC	SIEMERS LSTR HANAN 33317-ET	89	HOMEcomings	LUSTER-P	DOC	2858	661	558	68	46	114	3.23	2.69	1.47	99	94
SIEMERS WOLF HAKAN-P -ET		PC	SIEMERS LSTR HANAN 33317-ET	89	WOLFGANG P	LUSTER-P	DOC	2822	658	1469	46	51	97	3.44	2.90	1.41	102	98
SIEMERS HOM HAUGIE 36496-ET			SIEMERS LSTR HANAN 33317-ET	89	HOMEcomings	LUSTER-P	DOC	2747	581	718	56	42	98	3.19	2.41	1.41	105	100
SIEMERS DOC HANCOCK			SIEMERS MONTEREY HANAN-ET	85	DOC	MONTEREY	MOGUL	2715	534	1089	47	37	84	3.61	3.40	2.40	102	100
SIEMERS AVZ HANLEY 31445-ET			SIEMERS DOC HANAN 28286-ET	92	ALVAREZ	DOC	MONTEREY	2632	523	781	53	36	89	3.02	2.40	1.56	98	101
SIEMERS DOC HANDSOME -ET			SIEMERS MONTEREY HANAN-ET	85	DOC	MONTEREY	MOGUL	2693	501	1160	69	46	115	3.38	2.47	1.55	95	95
								2801	645	881	62	44	105	3.41	2.83	1.75	102	98

The BOLD LOOK of *Hanker*

If you are a discriminating breeder, do yourself a favor and study these bulls!
We're not sure that any cow in this business has ever had 6 such exciting bulls in her
first attempts? Elite type with good production and health!



SIEMERS LSTR HANAN 33317-ET
VG-89-2Y EX-MS MAX
Luster-P x Doc 28286 EX-92-3Y

We are proud to announce what we think are some of the most exciting now release bulls in the business.

Siemers Hanan **HANK-P** – Sire: Hanans PTAT 3.49 – UDC 2.89
Siemers Home **HARPY** – Sire: Homecoming PTAT 3.15 – UDC 2.56
Siemers Wolf **HAKAN-P** – Sire: Wolfgang P PTAT 3.48 – UDC 2.89

Siemers Hom **HANSKE-P** – Sire: Homecoming PTAT 3.30 – UDC 2.69
Siemers Hom **HAUGIE** – Sire: Homecoming PTAT 3.19 – UDC 2.37
Siemers Wolf **HULU RC** – Sire: Wolfgang P PTAT 3.93 – UDC 3.21

Read more on page xx

Image: © iStockphoto.com/Robert

Siemers 
Genetics for Cow People **Holsteins**

14421 Mineral Springs Road • Newton, Wisconsin 53063, USA
Tel.: (+1) 920-693-3600 • Email: siemers@excel.net

PARIS



➤ **SIEMERS LMDA PARIS 27856-ET EX-91**
➤ **GLOBAL COW OF THE YEAR - 2023**



➤ **SIEMERS DENVER PARIS-ET EX-91**

SIEMERS DENVER PARIS-ET

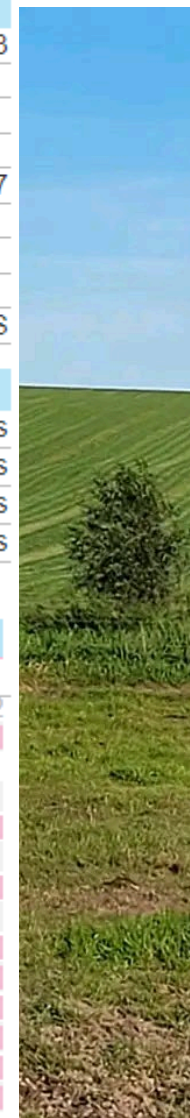
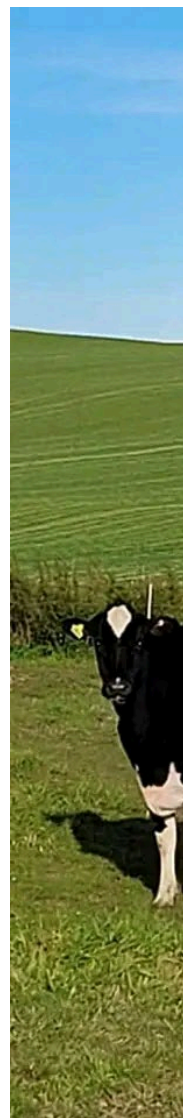
08/2017	CDCB SUMMARY GENOMICCOW				NMS +796
Milk	+2293	77%R	Cheese Merit \$		+803
Fat	+87	+0.00%	FMS +781		GMS
Protein	+74	+0.02%	Gestation Len.		MSP
CFP	+161		EFI %	gEFI 7.8%	gIB 7.9%
SCS	3.08	%R	Mastitis	Fert. Index	+2.7
PL	+4.6	%R	Livability -1.3	Heifer Liv.	
DPR	+1.9	%R	HCR +4.5	CCR +3.9	
RFI					
Feed Saved		%R		0 Dtrs 0 Herds	% US

08/2017	CALVING SUMMARY			SCE 9.6 %
Sire Calving Ease		9.6%	%R	Obs
Daughter Calving Ease		5.2%	%R	N/A Obs
Sire Stillbirth		7.8%	%R	Obs
Daughter Stillbirth		5.1%	%R	N/A Obs

08/2017	GHA TYPE SUMMARY				TPI +2784
PTAT +2.84	75%R	UDC+2.54	FLC+1.75	BSC +1.98	0 D / 0 H
					-2 -1 0 1 2
Stature	+2.34	Tall			
Strength	+1.30	Strong			
Body Depth	+1.72	Deep			
Dairy Form	+2.99	Open Rib			
Rump Angle	+0.82	Sloped			
Thurl Width	+2.23	Wide			
Rear Legs-Side	-0.13	Posty			
Rear Legs-Rear	+2.00	Straight			
Foot Angle	+2.27	Steep			
Feet & Legs Score	+2.05	High			
F. Udder Attachment	+2.68	Strong			
Rear Udder Height	+4.40	High			
Rear Udder Width	+4.05	Wide			
Udder Cleft	+1.84	Strong			
Udder Depth	+1.13	Shallow			
Front Teat Placement	+1.50	Close			
Rear Teat Placement	+1.66	Close			
Teat Length	-0.10	Short			

Breeding Lesson #3

Don't be Afraid to Play the:
"LONG GAME"



NAME	RC	PC	DAM	FS	SIRE	MGS	GMGS	GTPI	HHP\$	MILK	FAT	PRO	CFP	PTAT	UDC	FLC	zMAS	zLAM
SIEMERS CWAY PACE 36945-ET			SIEMERS ZAS PARIS 33821-ET	86	CONWAY	ZASBERILLA	DELTA-LAMBDA	3154	1061	735	119	64	183	2.39	2.28	1.55	92	97
SIEMERS RENGD PARFECT -ET			SIEMERS LMDA PARIS 27856-ET	91	RENEGADE	DELTA-LAMBDA	DENVER	3083	1011	1005	95	57	152	2.66	2.39	2.30	97	96
SIEMERS WH PYRO 36756-ET			SIEMERS ZAS PARIS 33821-ET	86	WHEELHOUSE	ZASBERILLA	DELTA-LAMBDA	3072	1020	1649	96	75	171	1.73	2.07	0.45	97	100
SIEMERS BED LILSMOOTH-P -ET		PC	SIEMERS LGCY PARIS 31379-ET	85	BEDROCK-PP	LEGACY	DELTA-LAMBDA	2970	1012	1196	81	52	133	1.32	1.79	0.07	107	91
SIEMERS RZ PAZZLE 34954-ET			SIEMERS LMDA PARIS 27856-ET	91	ROZLINE	DELTA-LAMBDA	DENVER	3053	1006	609	89	46	135	3.23	2.99	1.88	104	95
SIEMERS WH PENSKE 36731-ET			SIEMERS ZAS PARIS 33821-ET	86	WHEELHOUSE	ZASBERILLA	DELTA-LAMBDA	3038	985	1397	101	65	166	1.84	2.66	1.01	101	98
SIEMERS ASTD PYLER 34943-ET			SIEMERS LGCY PARIS 31379-ET	85	AUSTAD	LEGACY	DELTA-LAMBDA	2941	936	1335	77	61	138	2.06	1.79	0.71	103	94
SIEMERS TWN PARSLY 32480-ET			SIEMERS LMDA PARIS 27856-ET	91	TOWN	DELTA-LAMBDA	DENVER	2940	900	1612	77	66	143	1.68	2.05	0.69	99	103
SIEMERS GAME PIKE 35658-ET		Y	SIEMERS RON PARI 31387-ET	86	GAMEDAY	RONALD	IMAX	2921	928	1625	92	61	153	1.70	1.90	1.04	90	100
SIEMERS HANAN PEVE 35299-ET			SIEMERS LMDA PARIS 27856-ET	91	HANANS	DELTA-LAMBDA	DENVER	2850	660	1174	63	54	117	3.21	2.85	2.05	98	103
SIEMERS H PARTAKE 35318-ET			SIEMERS LMDA PARIS 27856-ET	91	HANANS	DELTA-LAMBDA	DENVER	2837	699	1271	54	58	112	2.84	2.63	1.65	99	100
								2987	929	1237	86	60	146	2.24	2.31	1.22	99	98

Breeding Lesson #4 – **EVOLVE**

➤ Which traits are increasing in reliability & peer reviewed research?

➤ Evolution of milk markets around the world needing specific milk caseins

➤ Slick & Polled

Action Items

➤ Switched to Clarifide Plus Testing a few years ago.

➤ Z_MAS

➤ Z_LAM

➤ CW\$

➤ Milk Caseins

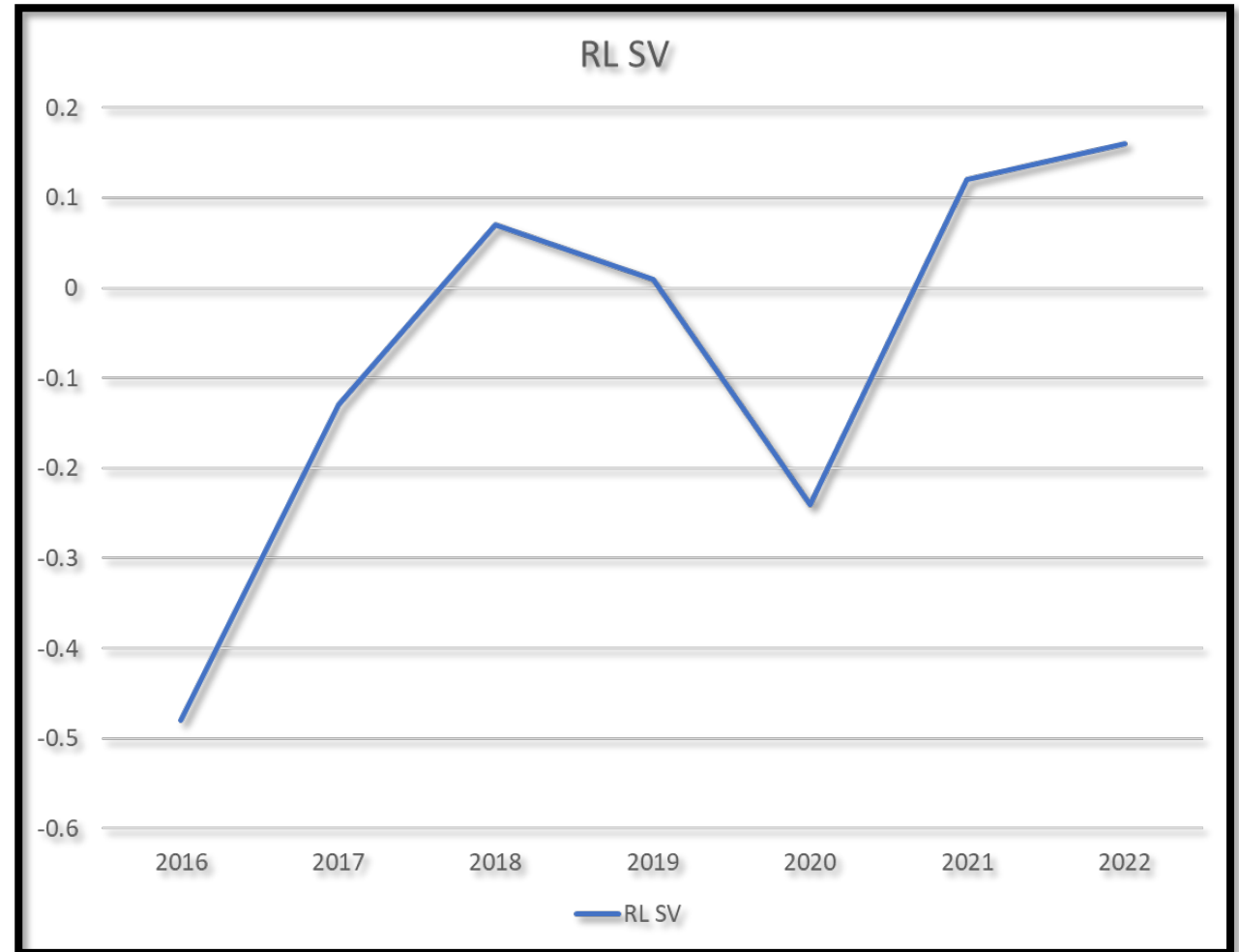
➤ Included Gene Tests for Important Traits

Select Sires Bulls Rear Legs Side View by Birth Year

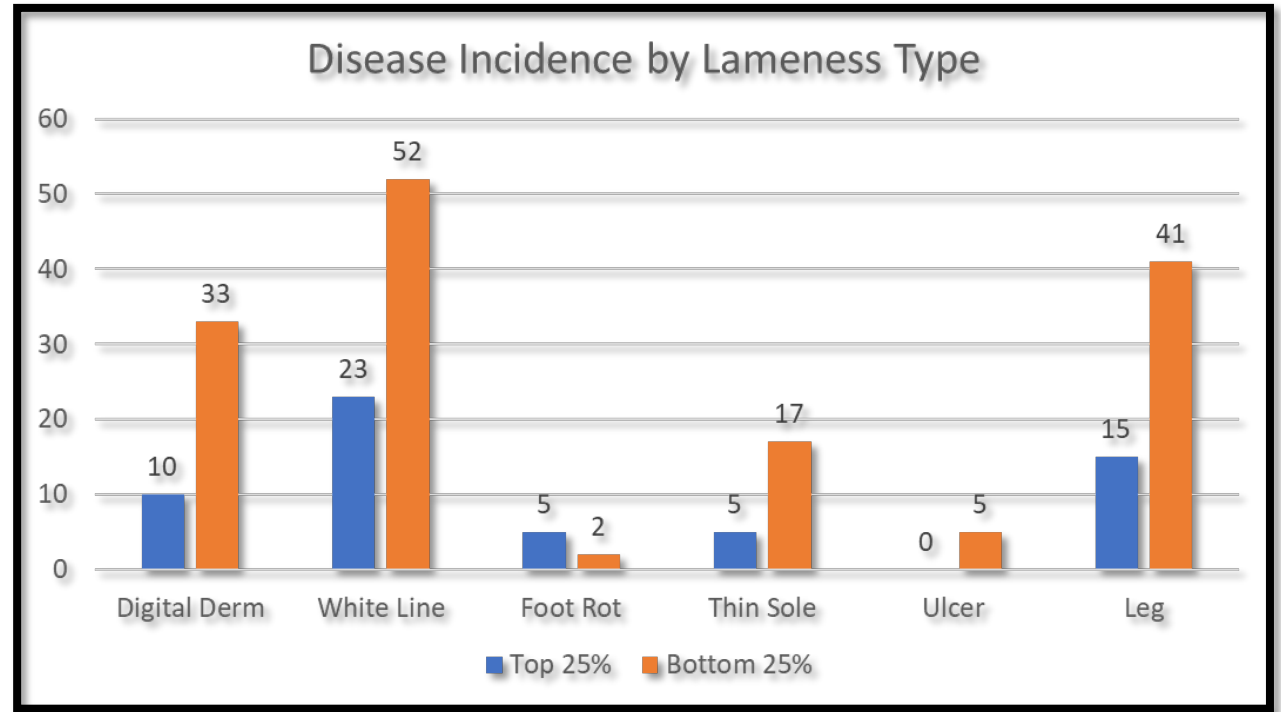
Have gone through a period of
bulls siring straight legs

Trend is moving away from straight
and towards more set to the leg

More bulls with positive values
born in '21 and '22 than with
negative values



Lameness Impact on Profitability



ZLAME	Avg ZLAME	Cows	Age	Lame Events	# Cows w/ Lame (no trim)	% Cows Lame	Digital Derm	White Line	Foot Rot	Thin Sole	Ulcer	Leg	Trim
104 to 110	106	211	42	211	44	21%	10	23	5	5	0	15	153
87 to 97	95	162	43	291	83	51%	33	52	2	17	5	41	152

Improved Hoof Health – Use Lameness

	Prod. Life	Cow Livability
F&L Composite	-0.10	-0.04
F&L Score	-0.21	-0.19
Rear Legs SV	-0.12	-0.01
Rear Legs RV	-0.18	-0.13
Foot Angle	-0.15	-0.26
Zoetis Lameness	0.22	0.23

Correlation between F&L Traits and Longevity

All bulls with ≥ 100 PL daughter as well as Zoetis Lameness, 1,160 bulls

Spring 2022



HOLSTEIN
AUGUST 2022



The Future is NOW

Breeding Lessons

#1	Families Matter
#2	Use the BEST Bulls
#3	Don't be Afraid to Play the: "LONG GAME"
#4	EVOLVE

Top 100 Herd Health Profit Dollars (HHP\$™)

Active Holstein Genomic Young Sires

* ≥ +1,123 HHP\$™



Top 100 TPI Proven Sires

* ≥ +2730 GTP



Lactanet

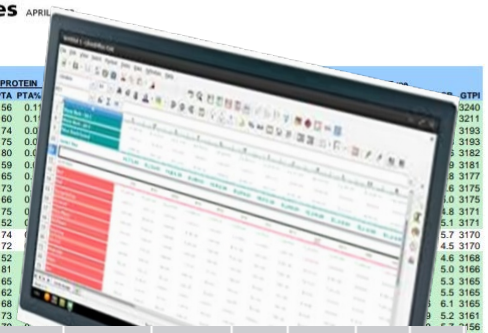
CANADIAN NETWORK FOR DAIRY EXCELLENCE



High Ranking TPI® Genomic Females

GTPP is a servicemark of Holstein Association USA, Inc. © 2022

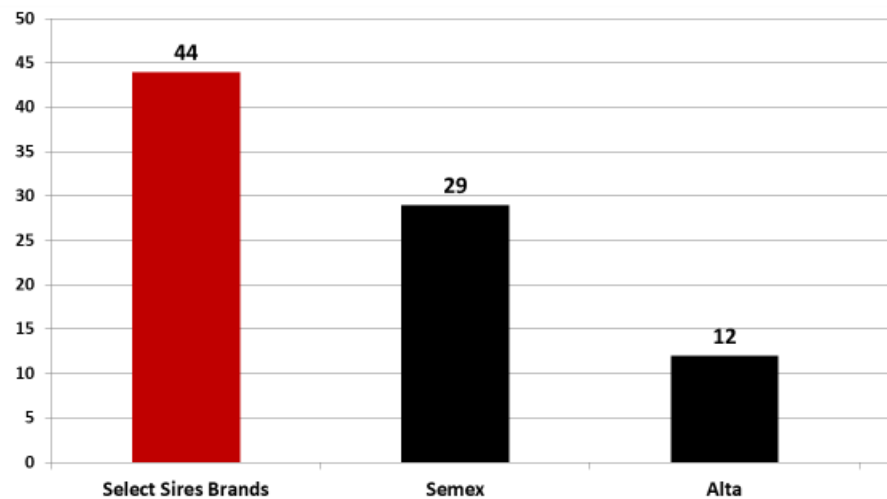
Registration Number	Name	Birth Date	GFI	Sire's Name	PROTEIN PTA	PTA
HO84000323190443	WILRA S-S-I 1910 2254-ET	2103	11.3	RMD-DOTTERER SSI GAMEDAY-ET	56	0.11
HO84000323132014	WET GAMEDAY MIZZY-ET	2112	11.0	RMD-DOTTERER SSI GAMEDAY-ET	60	0.11
HO840003234325918	AURORA PERFECT 23719-ET	2104	11.0	SIEMERS RENGD PERFECT-ET	74	0.00
HO840003241466325	WILRA SSI RGAL 1910 3324-ET	2109	11.7	T-SPRUCE RENEGADE REGAL-ET	75	0.00
HO840003235976371	T-SPRUCE TAOS 16364-ET	2104	11.1	LEANINGHOUSE TAOS-ET	80	0.00
HO840003232427750	KENYON-HILL GAMEDAY ONIA-ET	2110	11.6	RMD-DOTTERER SSI GAMEDAY-ET	59	0.00
HO840003230759219	ADAWAY PARSLY 3054-ET	2110	11.2	SIEMERS TWIN PARSLY 32480-ET	65	0.00
HO840003225323394	FB 644050 GAMEDAY 700856-ET	2109	11.2	RMD-DOTTERER SSI GAMEDAY-ET	73	0.00
HO840003233449771	AURORA AHEAD 8348-ET	2107	10.3	BLUMENFELD RENEGAD AHEAD-ET	66	0.00
HO840003225250911	WET CONWAY MYCROFET-ET	2112	11.6	SANDY-VALLEY R CONWAY-ET	75	0.00
HO840003227859381	PEN-COL GAMEDAY GLAMOUR-ET	2106	11.1	RMD-DOTTERER SSI GAMEDAY-ET	52	0.00
HO840003216689804	T-SPRUCE JAELA 47718-ET	2101	10.7	GENOSOURCE CAPTAIN-ET	74	0.00
HOCAN00014074909	PEAK ASTRA-ET	2107	11.9	PEAK WHEELHOUSE-ET	72	0.00
HO840003242770775	FB 603337 GAMEDAY 750574-ET	2110	11.6	RMD-DOTTERER SSI GAMEDAY-ET	82	0.00
HO840003150675433	PINE-TREE 7589 LION 8361-ET	1905	10.8	MR T-SPRUCE FRAZZ LIONEL-ET	51	0.00
HO840003215684463	SANDY-VALLEY MONDAY-ET	2107	11.2	RMD-DOTTERER SSI GAMEDAY-ET	65	0.00
HO840003237978644	AR-JOY OJ CONWAY MELISSA-ET	2109	11.1	SANDY-VALLEY R CONWAY-ET	62	0.00
HO840003245818188	COOKIECUTTER CONWAY HONDRIA	2112	11.0	SANDY-VALLEY R CONWAY-ET	68	0.00
HO840003235976680	T-SPRUCE CONWAY 16673-ET	2106	11.2	SANDY-VALLEY R CONWAY-ET	73	0.00



Name	Birth Year	GS	LPI Code	LPI	Pro\$	Milk	Fat	Prot	%F	%P	Conf	MS	F&L	DS	RP
SANDY-VALLEY R CONWAY-ET	2019	G	EBV	3671	2983	711	124	75	+0.81	+0.41	8	6	9	5	1
S-S-I PR RENEGADE-ET	2017	G	EBV	3668	2954	1165	108	72	+0.52	+0.25	9	6	14	3	1
REGAN-DANHOFF CAPONE-ET	2019	G	EBV	3648	3086	2239	84	96	-0.01	+0.16	10	8	11	4	3

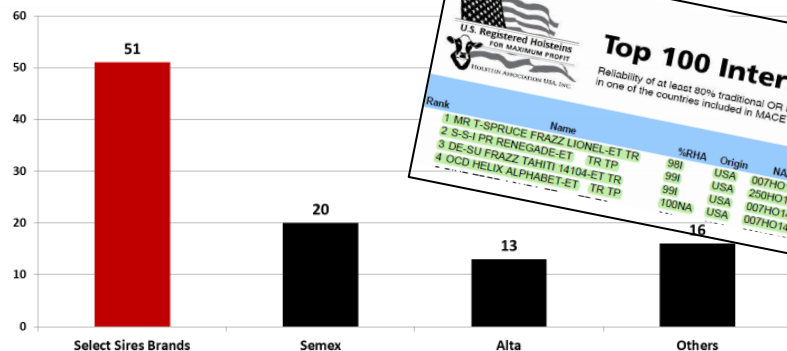
Top 100** Genomic Young Sires for DWP\$*

* ≥ +1139 DWP\$



Top 100** Proven Sires for DWP\$*

* ≥ +537 DWP\$



Top 100 International TPI® Bulls

Reliability of at least 80% traditional OPI 85% genomic for production and Reliability of at least 80% for type

APRIL 2022

Rank	Name	%RHA	Origin	NAAB	Pro	Fat	Milk	FE	%R	SCS	PL	LIV	FI	PIAT	%R	UDC	FLC	BWC	TPI®
1	MR T-SPRUCE FRAZZ LIONEL-ET TR	991	USA	007HO14454	101	152	3397	420	99.2	2.89	3.3	-0.7	-1.3	0.56	93	0.81	-0.41	-0.45	3172G
2	S-S-I PR RENEGADE-ET TR TP	991	USA	250HO14134	62	101	1117	251	99.2	2.89	3.6	0.4	1.4	1.77	95	1.49	1.40	1.06	3020G
3	DE-SU FRAZZ TAHITI 14104-ET TR	991	USA	007HO14229	74	106	2187	316	99.3	3.00	5.3	0.6	1.0	1.03	94	0.63	-0.52	-1.31	2994G
4	OOD HELIX ALPHABET-ET TR TP	100NA	USA	007HO14320	66	103	2422	290	95.2	2.90	4.1	-2.0	-0.5	1.51	90	1.69	0.00	-0.45	2944G





Proven Leaders
by Design, not Chance

SANDY
ALLEY
FARMS



QUESTIONS?